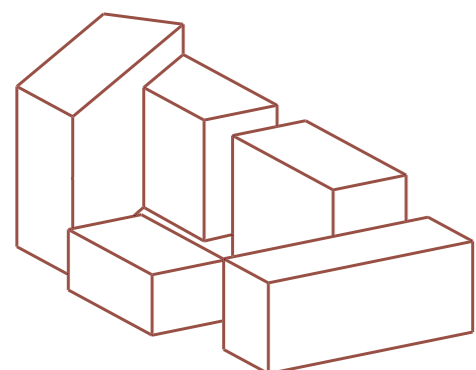
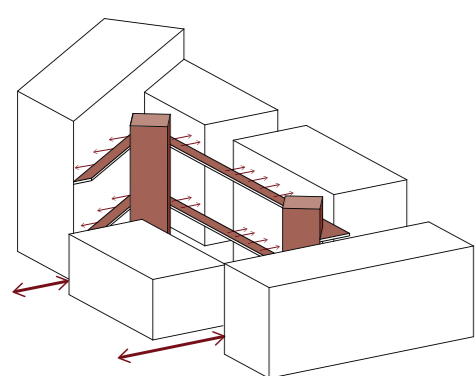


HOUSING 406

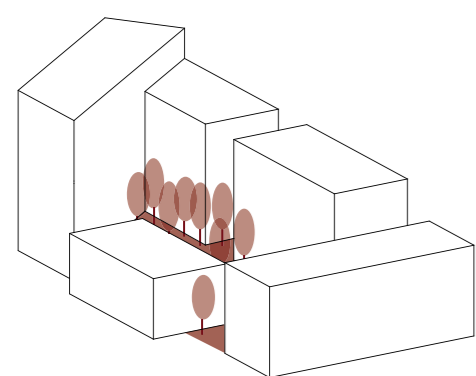


HOUSING IN TIME-LAPSE

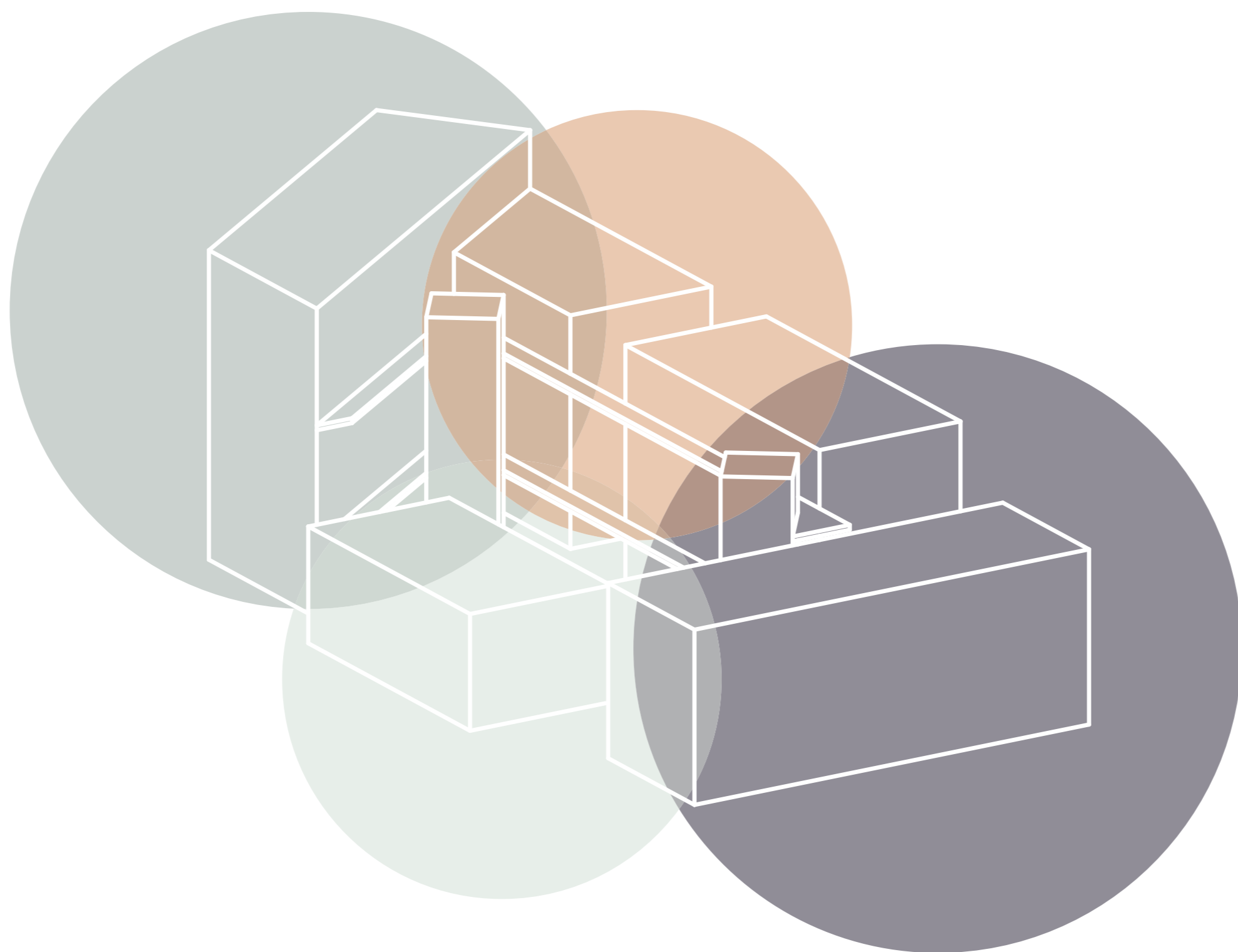
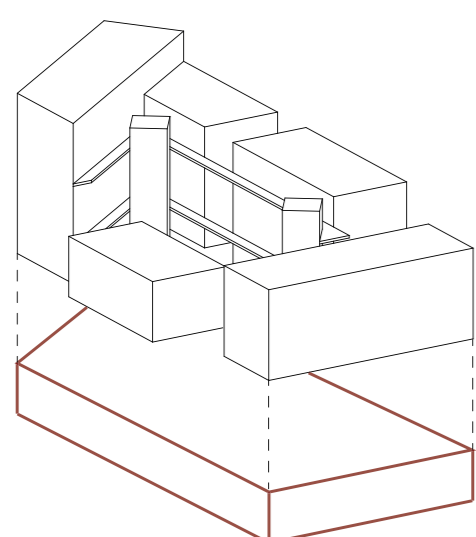
PRIMARY CIRCULATION



SHARED SPACES



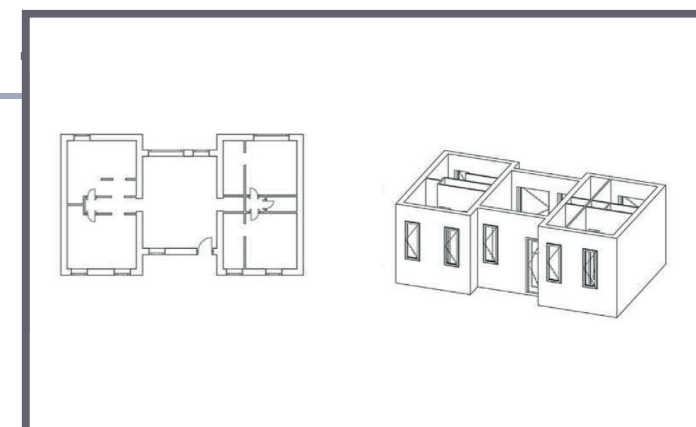
PARKING



PERMANENT STAY

Apartments for people that will live in the area for more than 1 year, like families, retired people, workers etc.

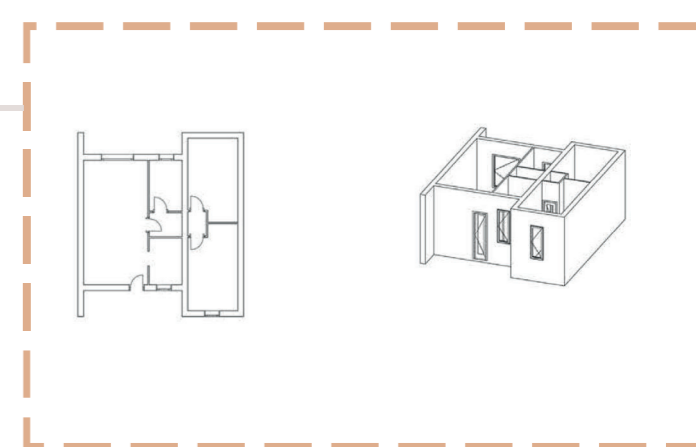
Area: >100 m²



SEASONAL STAY

Apartments for people that will stay in Helsingborg for a period between 3 months and 1 year. For example entrepreneurs interested in temporary activities in the area, start-up managers, seasonal workers, newcomers, students etc.

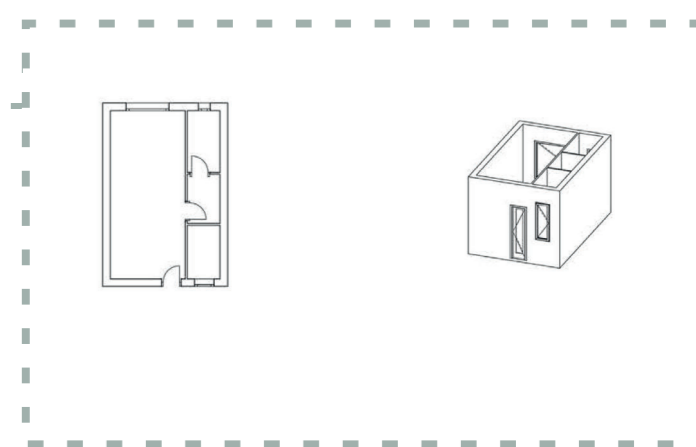
Area: 75 m²



FLEXIBLE STAY

Apartments for people that need a living space that easily turns into a working/exhibition area. For example artist studios, student rooms etc.

Area: 50 m²



TEMPORARY STAY

Apartments for people interested in a shorter stay, up to 3 months. For example tourists, volunteers, newcomers, exchange students etc.

Area: 50 m² /75 m²

